

## WHYDCRENTS

Deer Country Equipment is a warranty dealer for everything we rent. That means we sell, service and sell parts for the equipment that will be on your site. Factory trained technicians service and repair our rental fleet to ensure maximum equipment reliability. All of our rental equipment is for sale, at a great savings to our buying customers, which means there's a pretty good chance the equipment you rent from DC Rents will be nearly new. Comfortable, reliable, state of the art equipment.

*DC Rents "All you need"*



# DC Rents

340 HIGHWAY 12 NORTH STEINBACH, MB R5G 1T6  
204-326-1305 | 1-800-903-4008  
[www.deer-country.com](http://www.deer-country.com)



**Prices and Equipment Subject to Change Without Notice**  
 Rates Do Not Include Transportation

Rates listed are single shift 8 hours per day 176 hours per month 1.5x for double shift 16 hours per day 352 hours per month 2.0x rates for triple shift 24 hours per day 528 hours per month.

## RENTAL POLICIES

- Some equipment is required to have an insurance binder on file during the rental period.
- A valid driver's license and major credit card are required to rent.
- All rental charges are to be paid in full prior to the start of the rental.
- Rent starts when the equipment leaves our shop and ends when it is returned or called off rent.
- Rental rates are based on an 8 hour day, 40 hour week, and 176 hour month. Double shift operations will result in charges of 1.5 times the rate. Triple shift operations will result in charges of 2 times the rate.
- Rates include normal wear not damage. Damage repairs will be charged at our shop's current labor rate at the time of damage.
- Customers are responsible for damages incurred from theft, fire, and vandalism.
- Prices and equipment listed in this booklet may change at any time without notice.
- Proof of insurance will be required before equipment leaves Deer Country.

## RENTAL PURCHASE OPTIONS

### Option 1: Buy equipment currently rented

- All rentals must be paid on time in order to apply.
- Customers may elect to purchase equipment they are renting at any time.
- 100% of the current month's rental will be applied as a down payment on the equipment.
- Customers of multi-month rentals may be eligible for additional deposit money from the previous month.

### Option 2: Rent equipment for 6 months to build up a down payment

- Qualified customers may rent a new or used piece of equipment with 75% of every month's payment going to deposit.
- At the end of the 6 month period the customer can use accrued deposit money to help in securing financing.

Contact Deer Country Equipment for additional information.

1

TC16



2

TC20



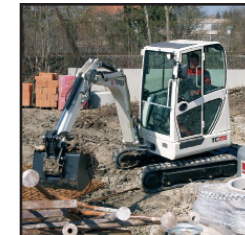
3

TC29



4

TC25



5

TC48



6

TC50



7

TC35





**Prices and Equipment Subject to Change Without Notice**  
 Rates Do Not Include Transportation

Rates listed are single shift 8 hours per day 176 hours per month 1.5x for double shift 16 hours per day 352 hours per month 2.0x rates for triple shift 24 hours per day 528 hours per month.

<b>Excavators</b>	<b>Monthly</b>	<b>Weekly</b>
3600 lb Class (TC16) (1)	\$2,300	\$1,150
4300 lb Class (TC20) (2)	\$2,500	\$1,250
6200 lb Class (TC29) (3)	\$2,700	\$1,350
7700 lb Class (TC25) (4)	\$2,850	\$1,425
8000 lb Class (TC37)	\$2,850	\$1,425
10,000 lb Class (TC48) (5)	\$3,600	\$1,800
11,000 lb Class (TC50) (6)	\$3,750	\$1,875
12,000 lb Class (TC60)	\$3,900	\$1,950
17,000 lb Class (TC75)	\$4,400	\$2,200
28,000 lb Class (TC125)	\$5,400	\$2,700
<b>Excavator Attachments</b>		
<b>Hydraulic Breakers</b>		
500 lb Class (fits TEREX TC35) (7)	\$2,400	\$1,200
750 lb Class (fits TEREX TC50)	\$3,200	\$1,600
1,000 lb Class (fits TEREX TC125)	\$4,000	\$2,000
<b>Hydraulic Grading Buckets</b>		
48" (Fits TEREX TC50)	\$800	\$400
54" (Fits TEREX TC125)	\$1,200	\$600
<i>(Photos on Adjacent Page)</i>		

<b>JD Tractors</b>	<b>Monthly</b>	<b>Weekly</b>
2000 SERIES(24-30HP)	\$1,600	\$800
3000 SERIES(30-44HP)	\$2,000	\$1,000
60" TILLER	\$1,000	\$500
55" BOX BLADE	\$400	\$200
60" BRUSHCUTTER	\$1,000	\$500
60" REAR FINISH MOWER	\$800	\$400
POST HOLE DIGGER	\$600	\$300
OFFSET DISK	\$600	\$300

**NORMAL RENTAL RULES APPLY**



<b>Loaders</b>	<b>Monthly</b>	<b>Weekly</b>
<b>Articulating Wheel Loader</b>		
1 Yard	\$3,100	\$1,550
1.5 Yard	\$3,500	\$1,750
2 Yard	\$3,900	\$1,950



# DC Rents

**Prices and Equipment Subject to Change Without Notice**

*Rates Do Not Include Transportation*

*Rates listed are single shift 8 hours per day 176 hours per month 1.5x for double shift 16 hours per day 352 hours per month 2.0x rates for triple shift 24 hours per day 528 hours per month.*



## Loaders

Rubber Track Skid Loader (includes dirt bucket)	Monthly	Weekly
900 lbs Operation Load (PT30)	\$2,100	\$1,050
1,900 lbs Operation Load (PT50/60)	\$2,700	\$1,450
2,750-3,100 lbs Operation Load (PT70/80)	\$3,000	\$1,500
3,800-4,000 lbs Operation Load (PT100)	\$3,200	\$1,600

## Telehandler Loader

5,500 lb Capacity, 19' Lift	\$2,600	\$1,300
-----------------------------	---------	---------

## Loader Attachments

Grapple Bucket - Tined	\$720	\$360
Hydraulic Post Hole Auger	\$1,200	\$600
Pallet Forks	\$400	\$200
Power Rake	\$1,800	\$900
Sweeper	\$2,600	\$1,300

## Tractor Loader Backhoes

4WD, 100hp, 19' Dig Depth	\$4,900	\$2,450
---------------------------	---------	---------



Asphalt Roller	Monthly	Weekly
3 Ton, Tandem, Vibratory	\$3,900	\$1,950

## Light Towers

4000/6000 Watt Lights	\$1,800	\$900
-----------------------	---------	-------



## Utility Vehicles & Site Dumpers

Tracked Skid w/dump (ST50)	\$2,250	\$1,125
Wheeled 4x4 w/dump	\$1,200	\$600
Site Dumper, 4,000 lb (TA2)	\$2,375	\$950
Site Dumper, 4,000 lb, Swivel (TA2s)	\$2,800	\$1,120
Site Dumper, 6,500 lb (TA3)	\$2,800	\$1,120
Site Dumper, 6,500 lb Swivel (TA3s)	\$3,000	\$1,200
Site Dumper, 13,000 lb (TA6)	\$3,650	\$1,460
Site Dumper, 13,000 lb Swivel (TA6s)	\$4,125	\$1,650
Power Buggy, 2,500 lb (PB16)	\$1,200	\$480
Power Buggy, 3,200 lb (PB21)	\$1,500	\$600

**Transportation available - Call for quote**

